



# 16th Avenue Road Improvement Project

## Woodbine Avenue to Kennedy Road

**GREAT|STREETS**  
Building Roads that Build Community **2025**



For Discussion Purposes Only, Subject to Change

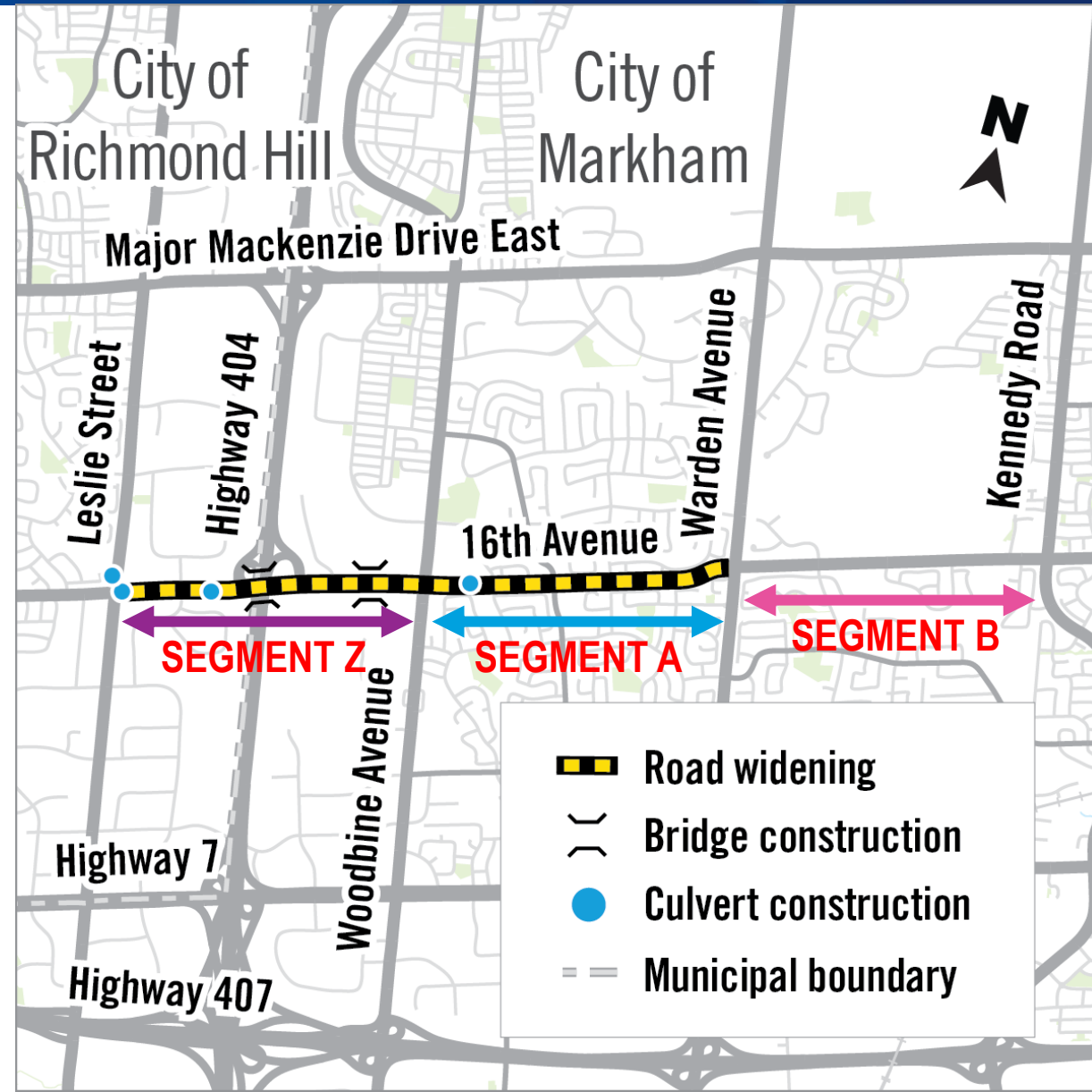
# Project Limits

## Three Construction Segments:

**Segment Z:** Leslie St to Woodbine Ave, 2026

**Segment A:** Woodbine Ave to Warden Ave, 2026

**Segment B:** Warden Ave to Kennedy Rd, 2028



# Environmental Assessment Highlights

## Purpose

Identify improvements to meet existing and future needs on 16<sup>th</sup> Avenue.

## Duration

June 2016 to August 2020

## Public Consultation

6 Open House events, ~340 attendees

>12,000 direct mail notices

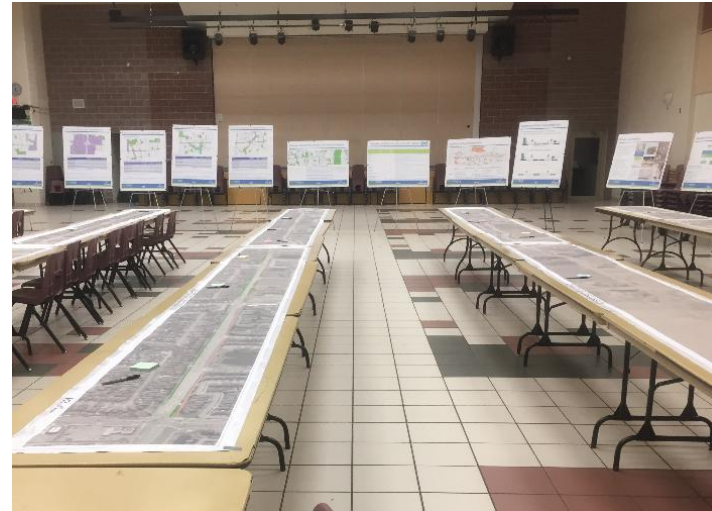
Social Media, Newspaper Ads,

>100 Individual Meetings, with agencies, stakeholders, residents, business owners

~2,600 postcards

> 500 respondents to Online surveys,

9 PIIO Requests



5567 Highway 7 East  
Markham, Ontario L3P 1R9  
(416) 798-7234  
(905) 294-8100  
www.markville.com

**Anniversary Special**

**FREE**  
**WIPER**  
fluid for every  
**WASH**  
**SERVICE**

Earn 1 Aeroplan Mile  
for every \$2 you spend!

staff for more details

The Regional Municipality of York  
**NOTICE OF OPEN HOUSES**  
Municipal Class Environmental Assessment Study

**16th Avenue**  
Study A between Yonge Street and Woodbine Avenue and  
Study B between Woodbine Avenue and York/Durham Line  
in the Town of Richmond Hill and City of Markham

York Region is undertaking two Schedule 'C' Environmental Assessment (EA) studies of 16th Avenue to identify possible improvements for current and future transportation needs for pedestrians, cyclists, public transit users and motorists. Study A is between Yonge Street and Woodbine Avenue in the Town of Richmond Hill and the City of Markham. Study B is between Woodbine Avenue and York/Durham Line in the City of Markham. The recommendations for 16th Avenue include widening to six lanes for Transit/HOV lanes from Yonge Street to McCowan Road, additional cycling facilities from Yonge Street to Dana at Coopers Parkway and paved shoulders from Donald Coopers Parkway to York/Durham Line.

You are invited to attend one of the three scheduled open houses to comment on these recommendations. An evaluation of alternative designs, recommended design plans and overall impacts will be available at each open house. The project team will also be present to answer your questions. Visit any time between 8:30 a.m. and 8:30 p.m.

The open houses will be held at the following locations:

City of Markham	Town of Richmond Hill
Date: Tuesday, October 10, 2017	Date: Tuesday, October 10, 2017
Location: Edward T. Looney Public School 35 Larkin Avenue	Location: York Region Transit/Van Dan Depot 33 Glenhill Avenue
Date: Wednesday, October 11, 2017	
Location: Pierre Elliott Trudeau High School 60 Blue Oak Avenue	

For those unable to attend in person, the information presented at the open houses will be published on [york.ca/16thavenue](http://york.ca/16thavenue) and on York Region's Facebook and Twitter social media channels. An accessible version of this notice is available upon request. This notice was issued on September 20, 2017.

To submit a comment, question or for more information, please contact:  
Christine Morrison, Community Services and Community Engagement Specialist  
The Regional Municipality of York, 17287 Yonge Street, Newmarket, L3Y 6Z1  
Phone: (416) 464-9075 ext. 7522 Fax: (905) 438-4586 Email: [cm3@york.ca](mailto:cm3@york.ca)

The studies are being conducted in accordance with "C" of the Municipal Class Environmental Assessment Document (October 2004, as amended in 2007, 2011 and 2012). Personal information submitted (e.g., name, address and phone number) is collected, stored and disclosed under the authority of the Environmental Assessment Act and the Municipal Freedom of Information and Access to Information Act for transparency and consultation purposes. Personal information you submit will become part of a public record that is available to the general public, unless you request that your personal information remain confidential.

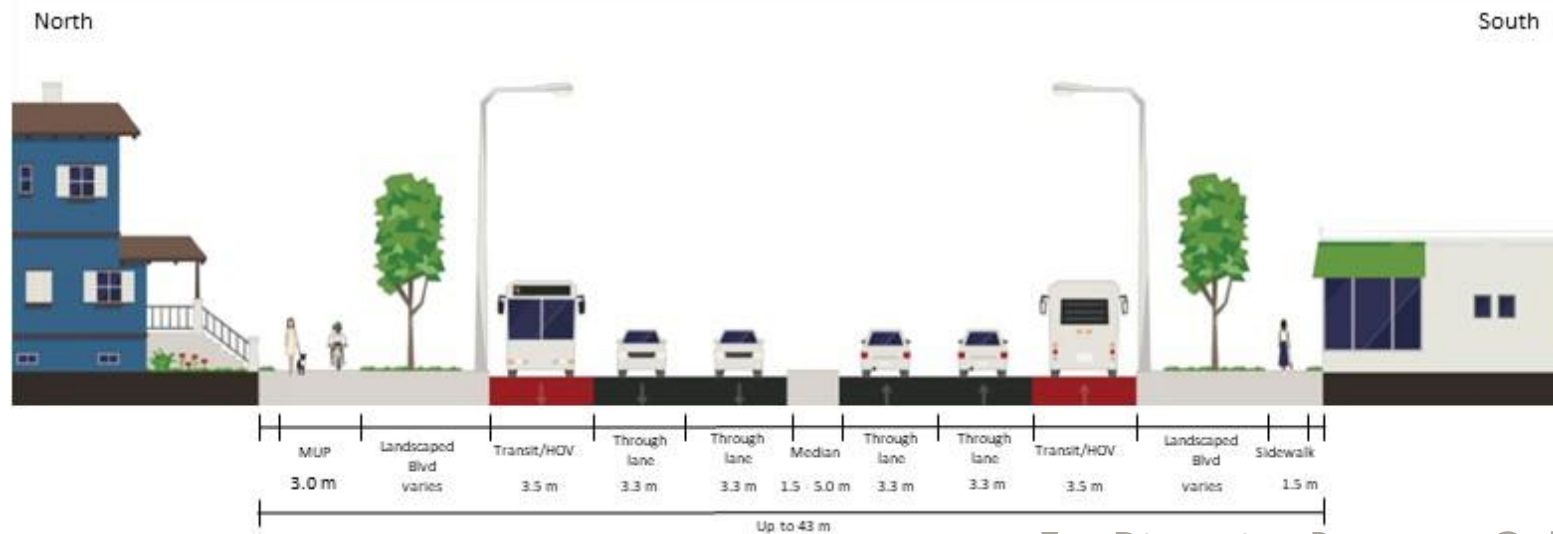
Wayne Emmerson  
York Region Chairman and CEO

# Environmental Assessment Recommendations

## Yonge to Woodbine (Widen for HOV & AT Improvements)

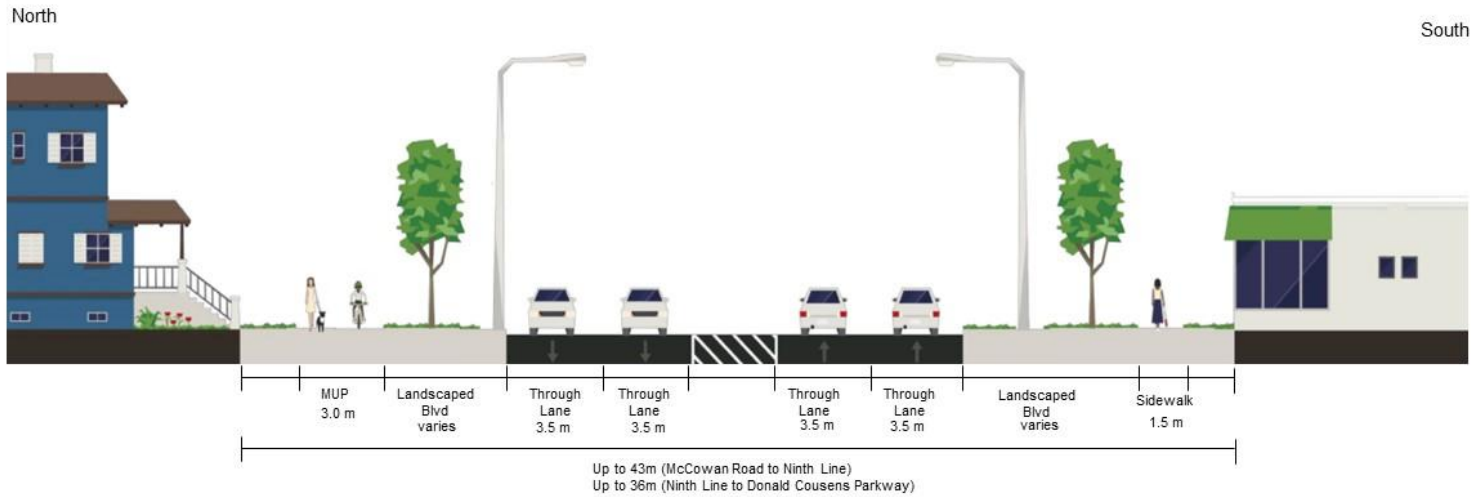


## Woodbine to McCowan (Widen for HOV & AT Improvements)

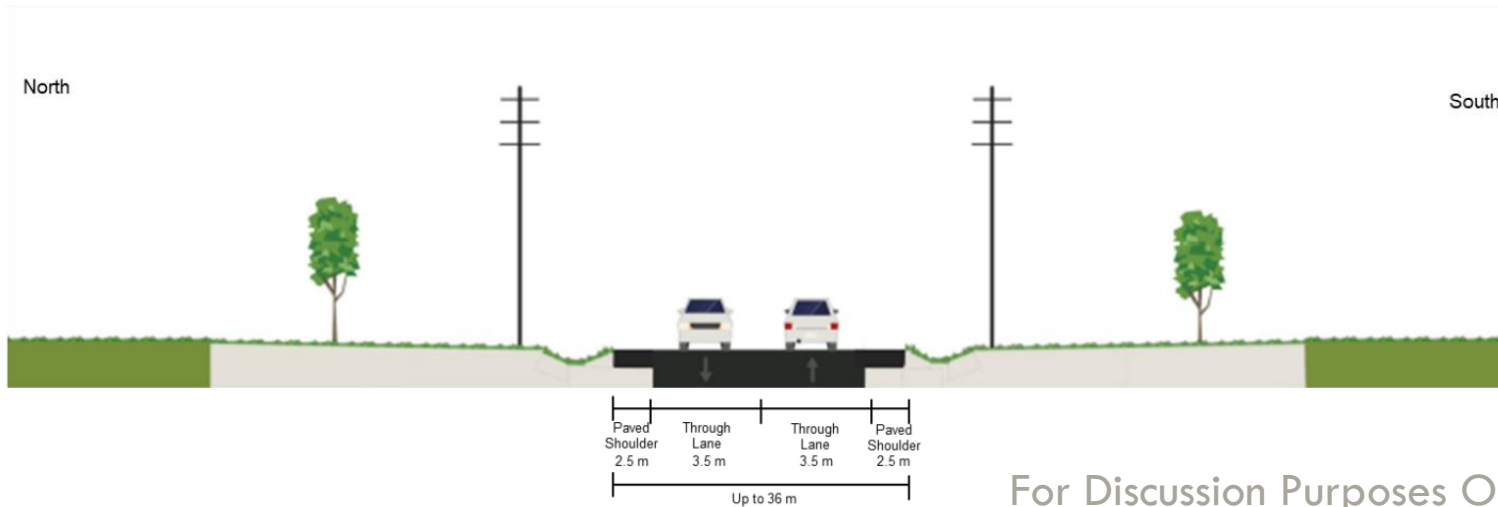


# Environmental Assessment Recommendations

## McCowan Rd to Donald Cousens Parkway (AT Improvements Only)



## Donald Cousens Parkway to York/Durham Line (Provide Paved Shoulders)



For Discussion Purposes Only, Subject to Change

# Detailed Design Scope of Work

## Objective

Complete tender package for bidding  
Includes developing drawings and specs.

## Five Design Stages

30%, 60%, draft tender, Tender

## Design Items

Roadworks, Stormwater Management, Streetlighting,  
Traffic Signals, Bridges/Culverts/Structures, Tree  
Management

>400 bid items.

## Stakeholders

Municipalities, property owners, permit agencies.

## Utilities Relocation



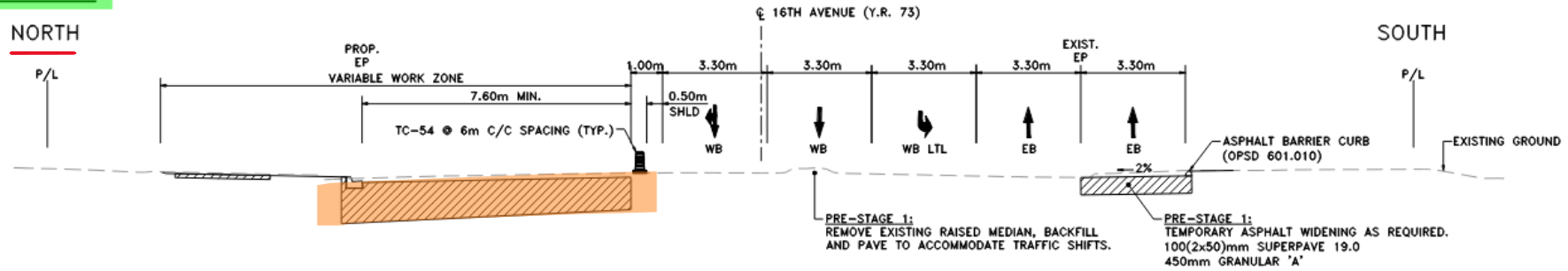
# Construction Timelines

	Design
	Utilities Relocation
	Construction

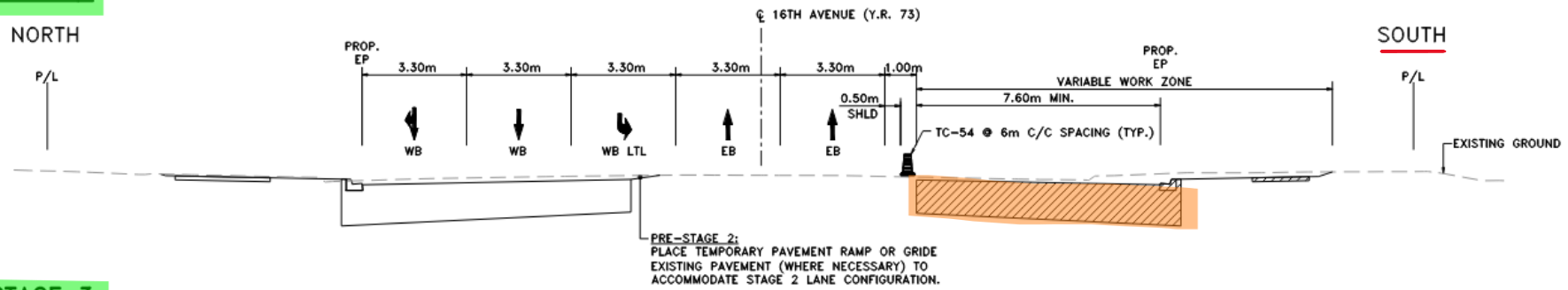
	2026	2027	2028	2029	2030
<b>Segment Z - Leslie to Woodbine</b>					
Utilities					
Stage 1					
Stage 2					
Stage 3					
<b>Segment A - Woodbine to Warden</b>					
Utilities					
Stage 1					
Stage 2					
Stage 3					
<b>Segment B - Warden to Kennedy</b>					
Design					
Utilities					
Stage 1					
Stage 2					
Stage 3					

# Staging Overview

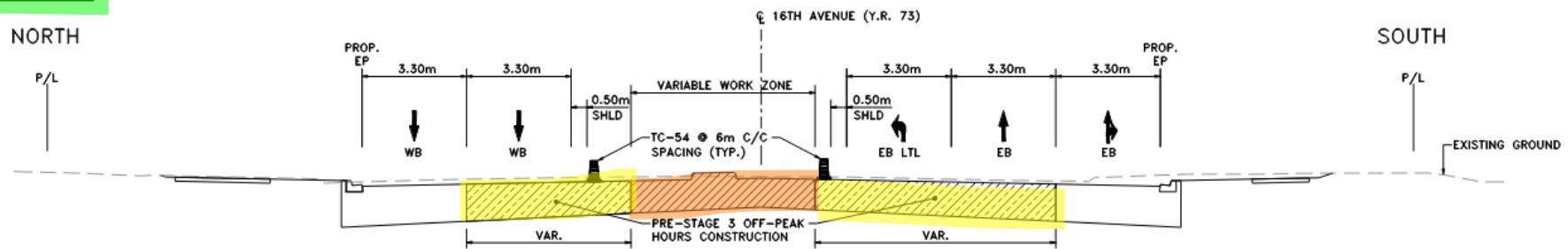
## STAGE 1 \*SEE STAGE 1 NOTES



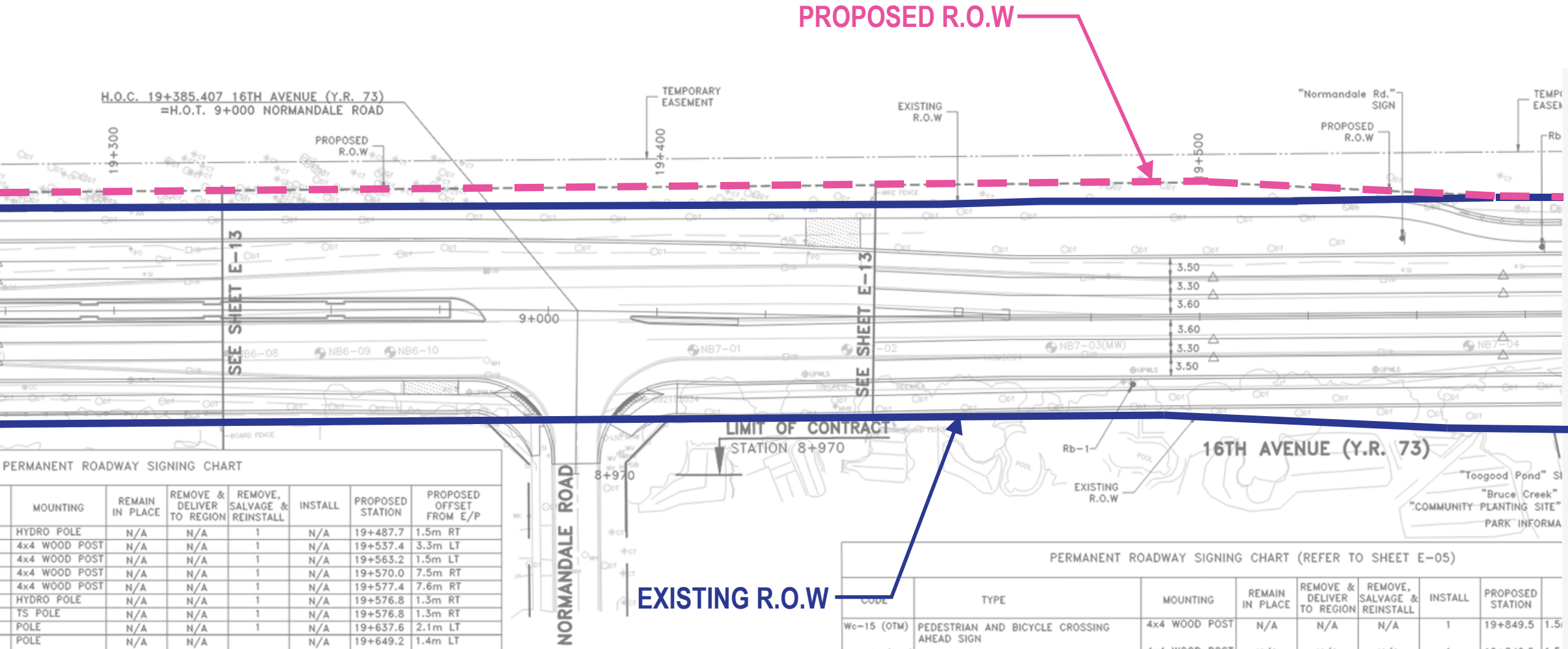
## STAGE 2 \*\*SEE STAGE 2 NOTES



## STAGE 3



# How will 16th be widened from Country Estates Dr to Kennedy Rd?



**PROPOSED R.O.W.**

**EXISTING R.O.W.**

PERMANENT ROADWAY SIGNING CHART

MOUNTING	REMAIN IN PLACE	REMOVE & DELIVER TO REGION	REMOVE, SALVAGE & REINSTALL	INSTALL	PROPOSED STATION	PROPOSED OFFSET FROM E/P
HYDRO POLE	N/A	N/A	1	N/A	19+487.7	1.5m RT
4x4 WOOD POST	N/A	N/A	1	N/A	19+537.4	3.3m LT
4x4 WOOD POST	N/A	N/A	1	N/A	19+563.2	1.5m LT
4x4 WOOD POST	N/A	N/A	1	N/A	19+570.0	7.5m RT
4x4 WOOD POST	N/A	N/A	1	N/A	19+577.4	7.6m RT
HYDRO POLE	N/A	N/A	1	N/A	19+576.8	1.3m RT
TS POLE	N/A	N/A	1	N/A	19+576.8	1.3m RT
POLE	N/A	N/A	1	N/A	19+637.6	2.1m LT
POLE	N/A	N/A	1	N/A	19+649.2	1.4m LT

PERMANENT ROADWAY SIGNING CHART (REFER TO SHEET E-05)

CODE	TYPE	MOUNTING	REMAIN IN PLACE	REMOVE & DELIVER TO REGION	REMOVE, SALVAGE & REINSTALL	INSTALL	PROPOSED STATION	PROPOSED OFFSET FROM E/P
Wc-15 (OTM)	PEDESTRIAN AND BICYCLE CROSSING AHEAD SIGN	4x4 WOOD POST	N/A	N/A	N/A	1	19+849.5	1.5m

# Noise Barriers, Temporary Fences

**New noise barriers** to be installed throughout the corridor

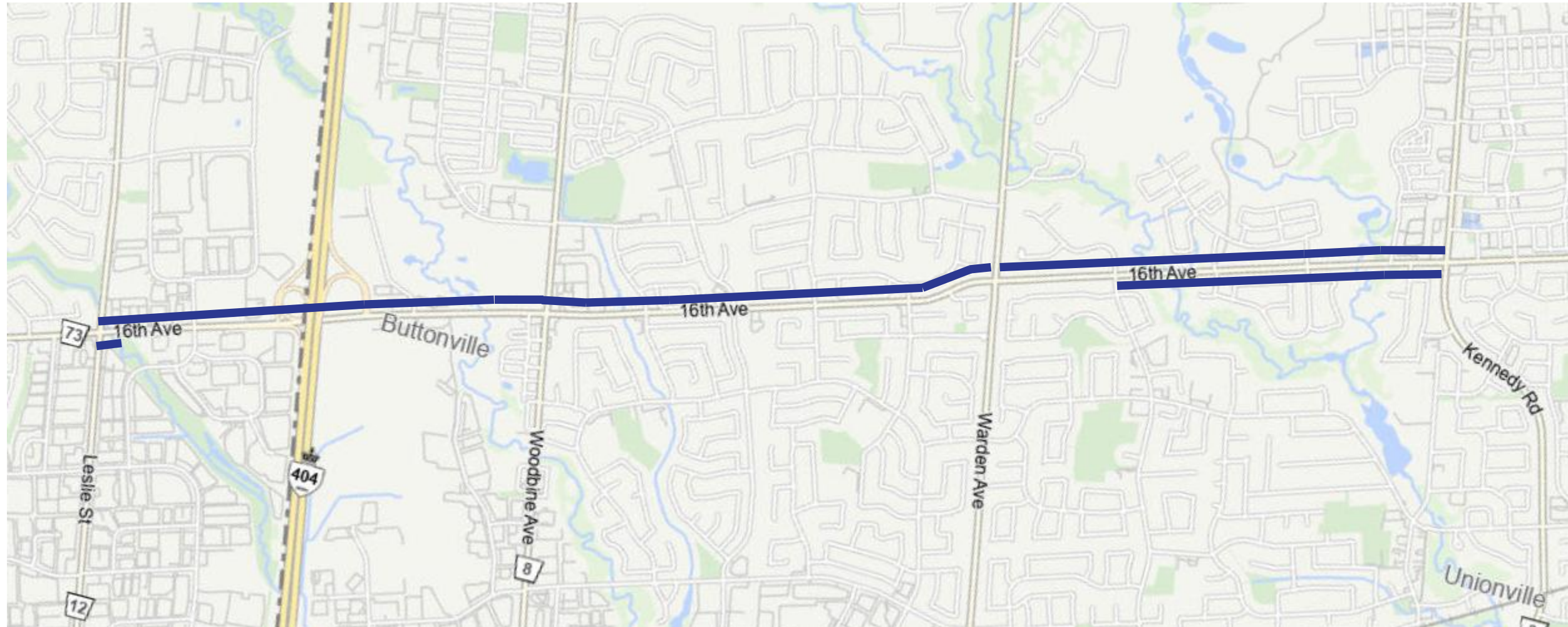
**Existing fences will be removed,** but left in place for as long as possible

**Temporary fences** to be installed if existing fences need to be removed in advance



# Active Transportation Facilities

## Multi-use Path (MUP) Locations

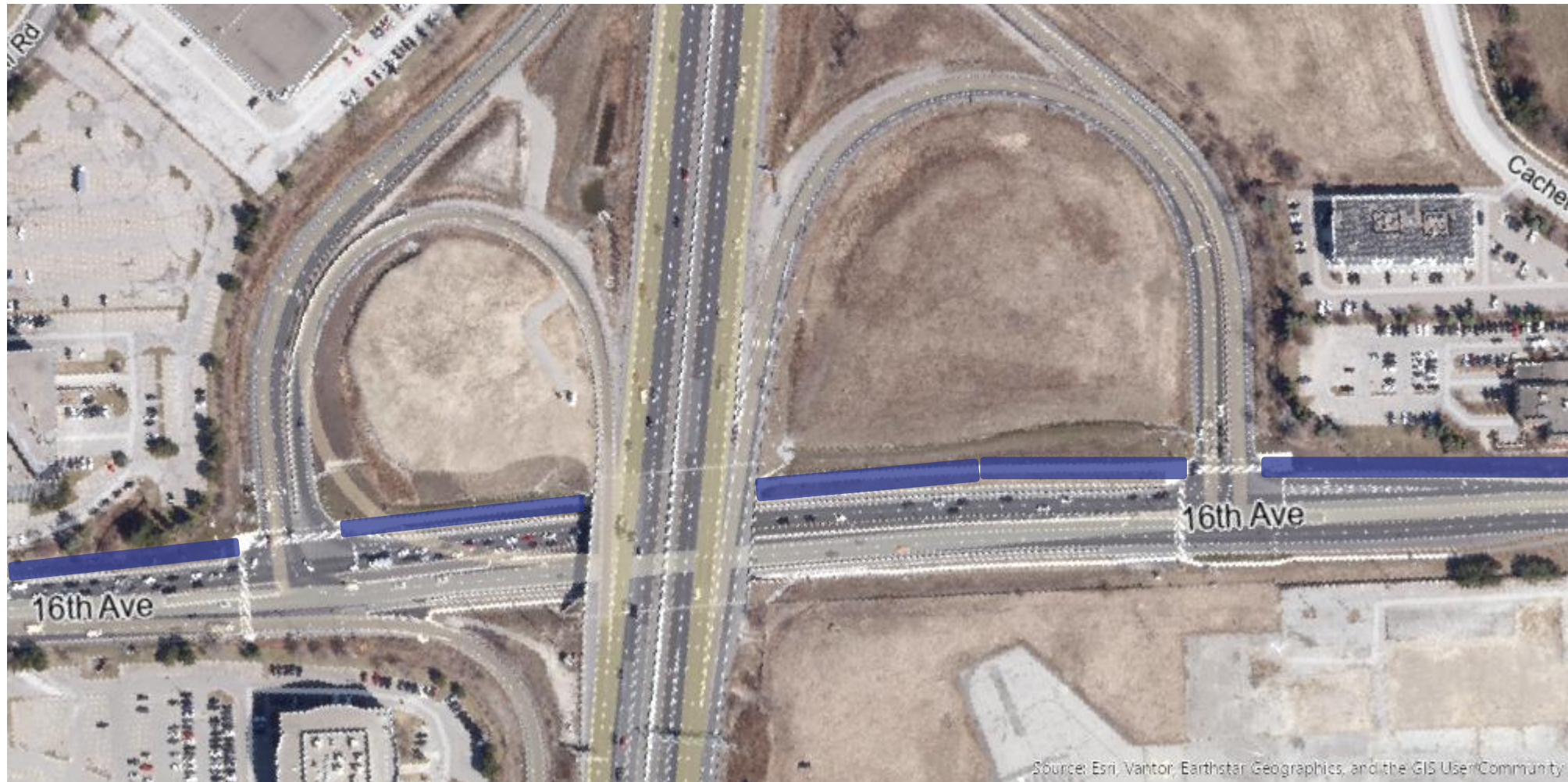


For Discussion Purposes Only, Subject to Change

# Active Transportation Facilities Planned Locations



## Planned MUP facilities at Highway 404



Source: Esri, Vantor, Earthstar Geographics, and the GIS User Community

For Discussion Purposes Only, Subject to Change

# Berczy Creek Trail Connection

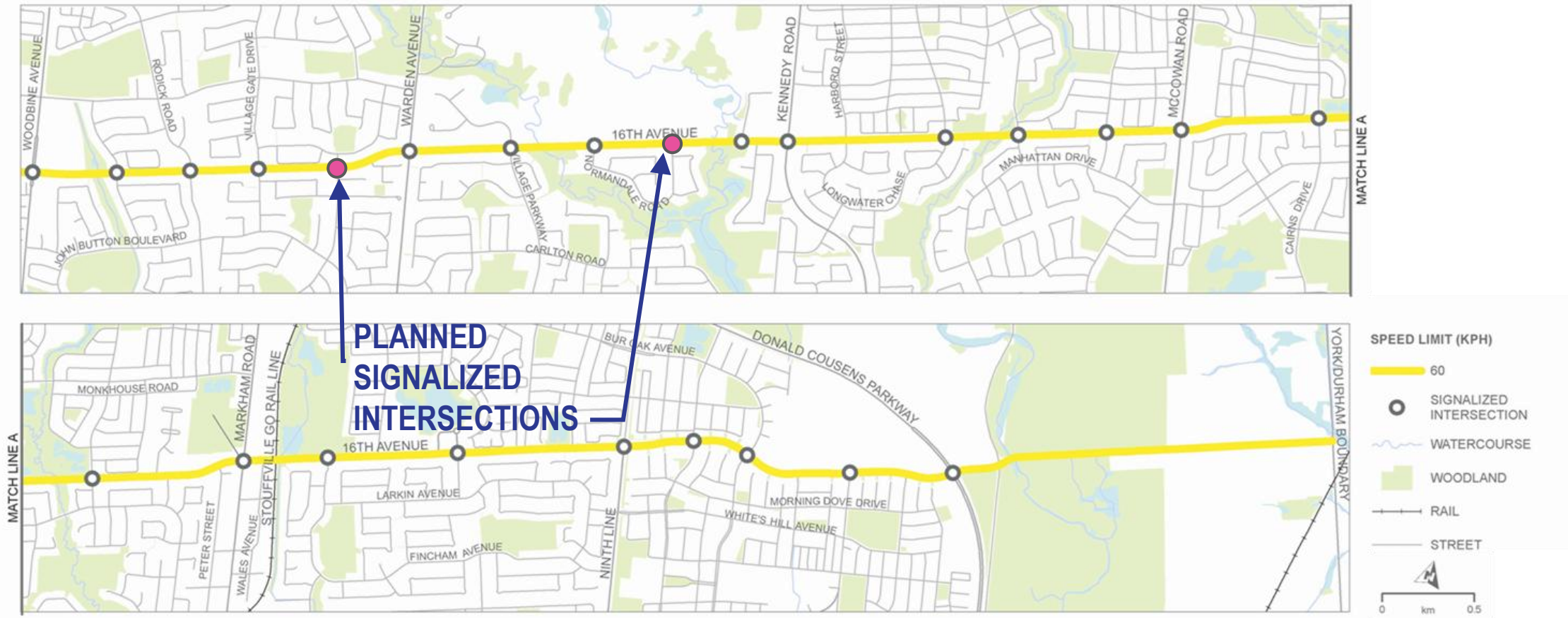


# Bruce Creek Trail Connection



# New Signalized Intersections

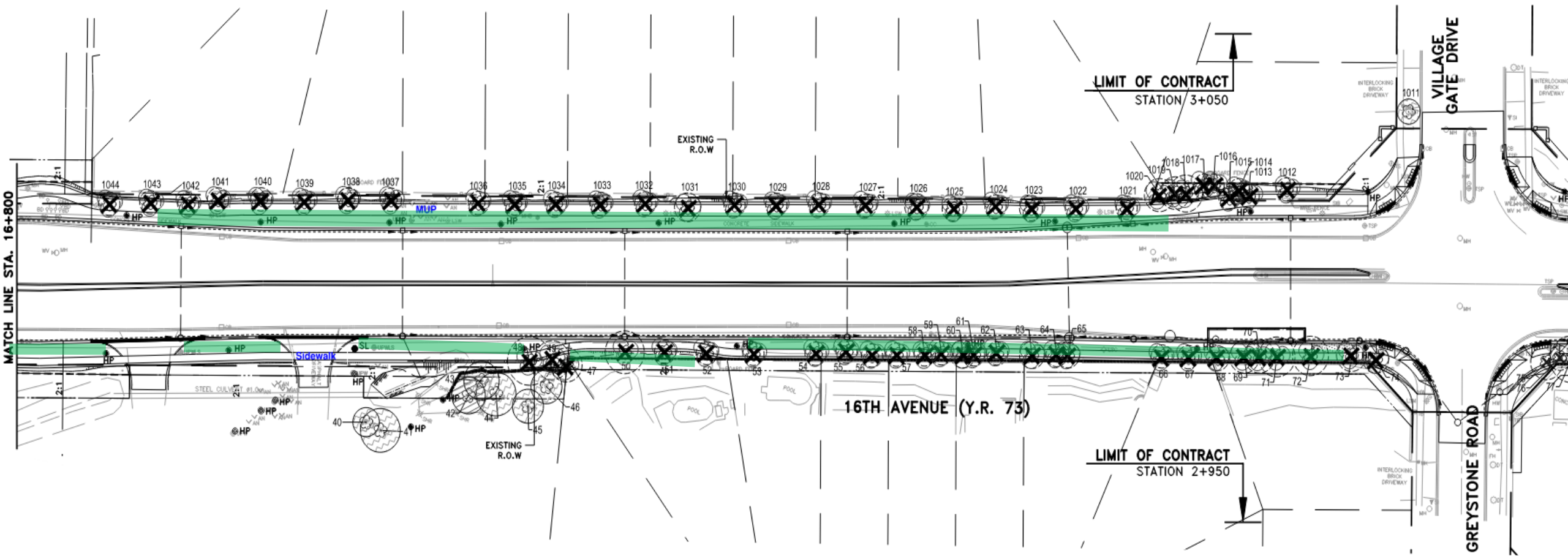
## Two New Locations: Lockridge Avenue and Normandale Road





# Streetscape and Tree Plantings

## Location: Village Gate Drive



# Construction Impact Mitigation

**How will construction impacts be mitigated to residents, drivers, and cyclists? Segments Z and A:**

Working Days and Hours	Pedestrian Traffic	Noise By-Laws	Driveway Access	Lane Restrictions	Dust	Traffic Control
<p>Work is permitted Monday through Saturday 7am to 7pm.</p> <p>Contractor has 390 days to complete the work</p>	<p>Pedestrian passage maintained at all times.</p> <p>Ramping provided for wheelchairs and strollers.</p> <p>Min. 3 crosswalks at signalized intersections</p>	<p>The Contractor is permitted to perform work at night if City of Markham and Richmond Hill permit.</p>	<p>All businesses and residences will have access to the roads.</p>	<p>Existing number of lanes maintained</p>	<p>Contractor required to use best practices, e.g. wet cutting of concrete and pavement</p>	<p>Combination of signs, barriers, lights, and traffic control persons.</p>

# 2026 Construction Projects Map

**Project Type**

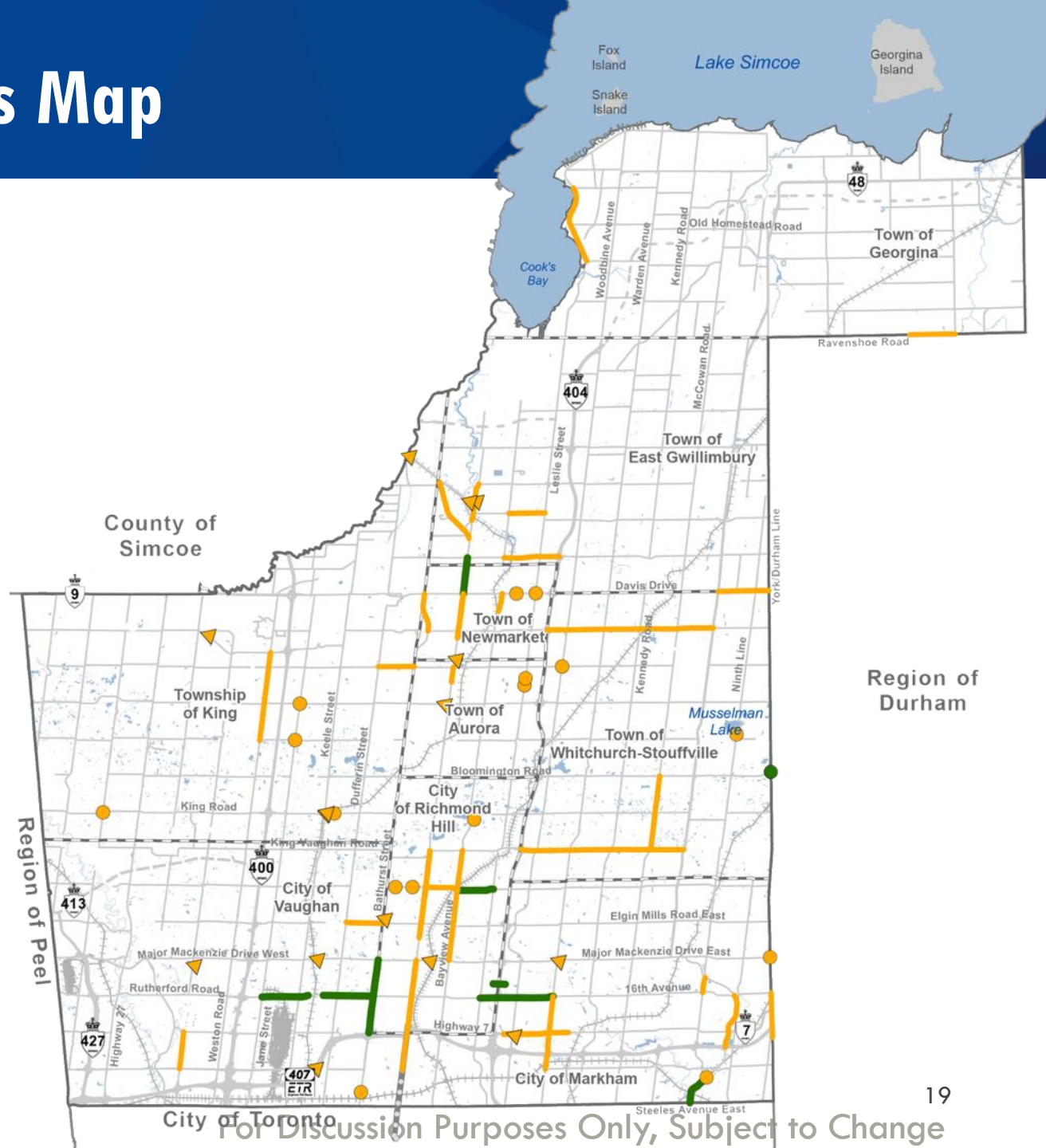
- △ Bridge/Culvert/Retaining Wall
- Interchange/Intersection\*

**Program Type**

- Construction (Growth)
- Construction (Asset Management)

\* Intersection improvements completed in conjunction with road rehabilitation are not shown

-  Yonge Street North Subway Extension (YNSE)
-  Provincial Freeway
-  Provincial Highway
-  Regional Road
-  Railway
-  Chippewas of Georgina Island First Nation
-  Water Bodies



# Thank You

For project information contact:

**Colin Wong**

Senior Project Manager

York Region Public Works

[colin.wong@york.ca](mailto:colin.wong@york.ca)

